



## Inclusive Emergency Preparedness for People with Disabilities

- **will begin at 2 pm ET**

Audio and Visual are provided through the on-line webinar system. This session is closed captioned. Individuals may also listen via telephone by dialing 1-857-232-0476 Access Code: 368564 This is **not** a toll-free number.

## About Your Hosts...

- TransCen, Inc.
  - Mission Statement: Improving lives of people with disabilities through meaningful work and community inclusion
- Mid-Atlantic ADA Center, a project of TransCen, Inc.
  - Funded by National Institute on Disability, Independent Living, and Rehabilitation Research (NIDILRR), Administration for Community Living, U.S. Department of Health and Human Services



## Listening to the Webinar

Online:

- Please make sure your computer speakers are turned on or your headphones are plugged in
- Control the audio broadcast via the AUDIO & VIDEO panel
- If you have sound quality problems, please go through the AUDIO WIZARD by selecting the microphone icon within the AUDIO & VIDEO panel



3



## Listening to the Webinar (cont.)

- To connect by telephone:

**1-857-232-0476**

**Pass Code: 368564**

This is **not** a toll-free number

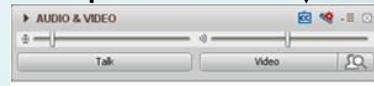
4



## Captioning

Real-time captioning is provided; open the window by selecting the “CC” icon in the AUDIO & VIDEO panel

- You can move and re-size the captioning window.
- Within the window you change the font size, and save the transcript

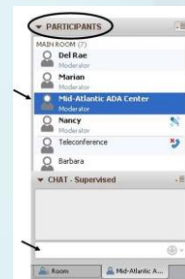


5



## Submitting Questions

- **In the webinar platform:**
  - You may type and submit questions in the CHAT area text box or press Control-M and enter text in the CHAT area; your questions and comments will only be visible by session moderators
  - If you are connected via a mobile device you may submit questions in the CHAT area within the app
- Questions may also be emailed to: [ADAttraining@transcen.org](mailto:ADAttraining@transcen.org)

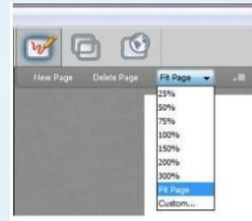


6




## Customizing Your View

- Resize the whiteboard where the presentation slides are shown to make it smaller or larger by choosing from the drop down menu located above and to the left of the whiteboard; the default is “fit page”



7

## Customize Your View continued

- Resize/Reposition the CHAT, PARTICIPANT, and AUDIO & VIDEO panels by “detaching” and using your mouse to reposition or “stretch/shrink”
- Each panel may be detached using the  icon in the upper right corner of each panel

8

## Technical Assistance

If you experience technical difficulties

- Use the CHAT panel to let us know
- E-mail [ADAtraining@transcen.org](mailto:ADAtraining@transcen.org)
- Call 301-217-0124

9



## Archive

- This webinar is being recorded and can be accessed within a few weeks
- You will receive an email with information on accessing the archive

10



Mid-Atlantic ADA Center  
November 15<sup>th</sup> 2018



# Inclusive Emergency Preparedness For People With Disabilities



## Agenda For Today

- I. Emergency Management 101 & Disability Rights**
- II. Functional Planning Principles: Evacuation, Transportation, Communication, Shelter**
- III. Personal and Community Preparedness**
- IV. Resources**

## Emergency Management 101



- I. All Hazards
- II. Nat. Incident Mgt. Sys
- III. Phases of a Disasters

## Emergency Management 101



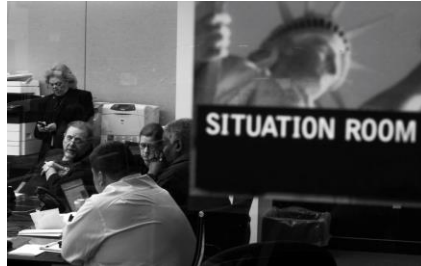
Accessible parking spaces destroyed by Sandy

- I. Key Definitions
- II. ADA and other Laws
- III. Important Cases:
  - Pennsylvania Dept. of Corrections v. Yeskey
  - Communities Actively Living Independent & Free (CALIF) v. City of Los Angeles
  - Brooklyn Center for Independence of the Disabled v. Bloomberg

# Emergency Management 101



Planning boxes who, why, where, when, how, what



NYC Emergency Management Situation Room

Engage Leadership  
 Plan Review  
 Roles and Responsibilities  
 Resource Management

Agreements  
 Document and Codify Efforts  
 Community Engagement

# Functional Planning Principles



Accessible taxi van in New York City.



Volunteer pushing a wheelchair in a shelter.

Self-determination  
 "Case by Case" Assessment  
 Equal opportunity to benefits  
 Inclusion  
 Integration

Physical access  
 Equal access  
 Effective communication  
 Modifications  
 No Charge



## Evacuation – Accessible Planning



Cars driving on multi-lane city highway.

**NYC** Emergency Management 17

- I. Timeline of evacuation operations**
- II. Effective public messaging**
- III. Consider appropriate place of intake**

**NYC** Mayor's Office for People with Disabilities

## Evacuation – Accessible Transportation



Accessible taxi van in New York City.

**NYC** Emergency Management 18

- I. Understand paratransit operations**
- II. Consider assets**
- III. Plan to transport service animals and durable medical equipment**

**NYC** Mayor's Office for People with Disabilities

## Accessible Communication



Man using an electronic tablet.

- I. Flexible and multiplatform**
- II. Alternative formats**
- III. Info and alerts**

## Accessible Sheltering



View of shelter from DOJ Guidelines.

- I. Consider developing a facility matrix or database for sheltering**
- II. Functional Needs Supporting Services (FNSS)**
- III. Training and exercise**

## Accessible Sheltering



Amenities include canes, walkers, wheelchairs, chargers and more

**NYC** Emergency Management 21

- I. Shelter amenities include accessible cots, mobility aides, posters, storage space for refrigerated medications, tablets, etc.
- II. Assigning ADA coordinators and administrators

**NYC** Mayor's Office for People with Disabilities

## Personal Preparedness

**Make a Plan**

**Pen filling out a plan**

**NYC** Emergency Management 22

**Gather Supplies**

**Go bag with supplies**

**Stay Informed**

**Phone on a keyboard**

**NYC** Mayor's Office for People with Disabilities

## Public Messaging



Smart phone with Notify NYC app

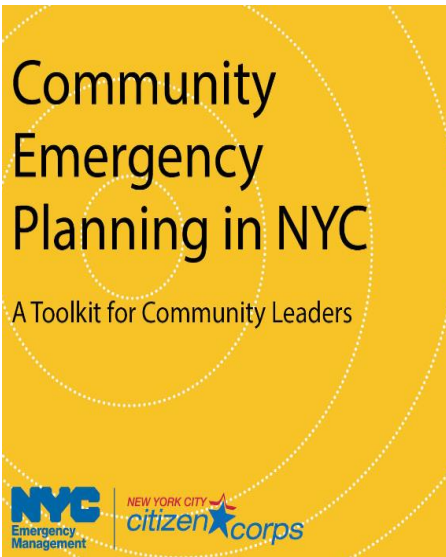
### Notify NYC

Local Emergency Alerts

13 Languages & ASL

Text, Call, Email

## Community Planning



### Contents:

- I. Hazards
- II. NYC Plans
- III. Making a community emergency plan

# Engagement



Partners participating at the symposium

Emergency Planning for People with Access and Functional Needs  
Symposium Report

NYC Emergency Management

NYC Mayor's Office for People with Disabilities

Edition 4

# CAREGIVERS IN ACTION



## Building Disability Coalitions & the Curb Cut Effect



Tactile warning on a curb cut on a sidewalk.  
Individual with a white cane in the background.



Individuals with signs behind a blue banner that reads  
'NYC Emergency Management Serving Our Communities'

27

## Resources

- I. CDC: Emergency Preparedness:** Including People with Disabilities  
<https://emergency.cdc.gov/>
- II. Cal OES: AFN Library**  
<http://www.caloes.ca.gov/cal-oes-divisions/access-functional-needs/afn-library>
- III. Homeland Security:** Civil Rights in Emergencies and Disasters  
<https://www.dhs.gov/civil-rights-emergencies-and-disasters>
- IV. HHS:** Emergency Preparedness for Persons with Disabilities  
<https://www.hhs.gov/civil-rights-for-individuals/special-topics/emergency-preparedness/resources-persons-disabilities/index.html>
- V. Smart Cities for All:** Toolkits for inclusion  
<http://smartcities4all.org>
- VI. ADA Pacific/FEMA Webinar Series:** Emergency Management and Preparedness-Inclusion of Persons with Disabilities  
<http://adapresentations.org/schedule.php>
- VII. American Red Cross:** Disaster Safety for People with Disabilities  
<https://www.redcross.org/get-help/how-to-prepare-for-emergencies/disaster-safety-for-people-with-disabilities.html>

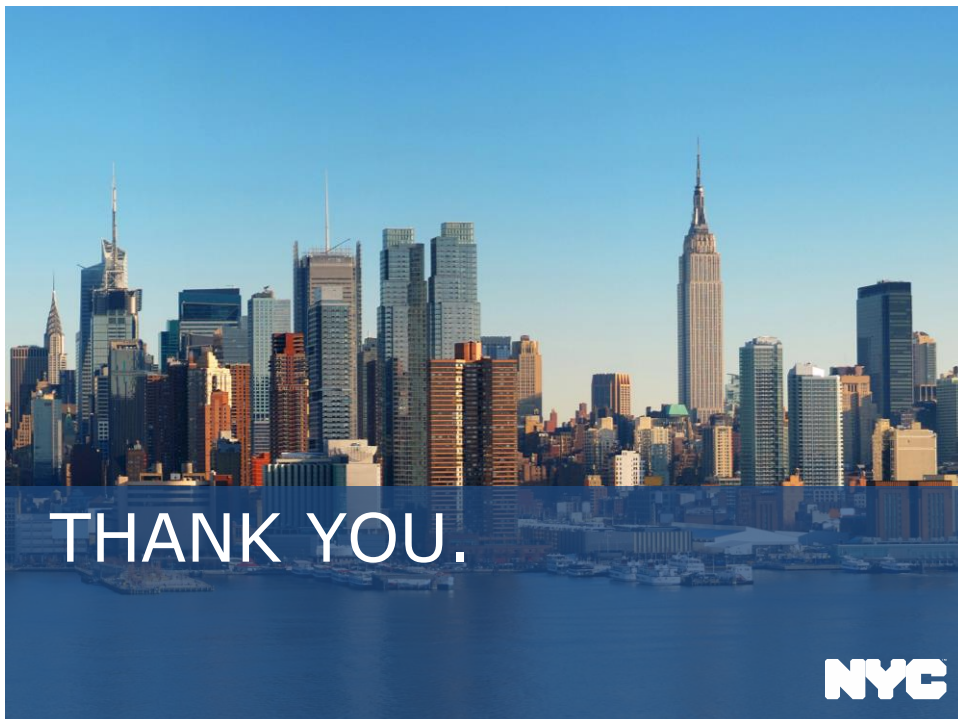
## Resources & Contacts

- I. NYCEM and MOPD Online:** Sources and materials  
<https://www1.nyc.gov/site/em/ready/disabilities-access-functional-needs.page>
- II. FEMA:** Functional Needs Support Services for Shelters(FNSS)  
<https://www.fema.gov/media-library/assets/documents/26441>
- III. ADA.GOV Emergency Preparedness & Response:** DOJ Technical assistance and other resources  
[https://www.ada.gov/emerg\\_prep.html](https://www.ada.gov/emerg_prep.html)
- IV. The Partnership For Inclusive Disaster Strategies:** Disaster After Action Report  
<http://www.disasterstrategies.org/>



**Eli Fresquez, Esq.**  
 NYC Mayor's Office for People with Disabilities  
 212-788-2505  
[fresquez@cityhall.nyc.gov](mailto:fresquez@cityhall.nyc.gov)

**Matt Puvogel**  
 NYC Emergency Management  
 718-422-8593  
[mpuvogel@oem.nyc.gov](mailto:mpuvogel@oem.nyc.gov)



## Mid-Atlantic ADA Center TransCen, Inc.

- 12300 Twinbrook Parkway, Suite 350  
Rockville, MD 20852
- Toll Free: 800-949-4232 (DC, DE, MD, PA, VA, WV)  
Telephone: 301-217-0124  
Fax: 301-251-3762  
TTY: 301-217-0124
- **[ADAinfo@transcen.org](mailto:ADAinfo@transcen.org)**  
**[www.ADAinfo.org](http://www.ADAinfo.org)**