



Making Arrests and Detention Accessible for Deaf and Hard of Hearing People

Will begin at 2:00 p.m. Eastern Time

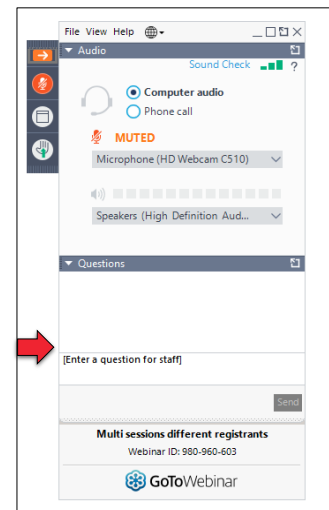
- Audio and visuals are provided through the online webinar platform
- Access to presentation handouts was included in the email reminder you received for this session
- This session will be open-captioned

1



Technical Assistance

- If you experience technical difficulties
 - Use the QUESTIONS panel to let us know
 - Call 301-217-0124

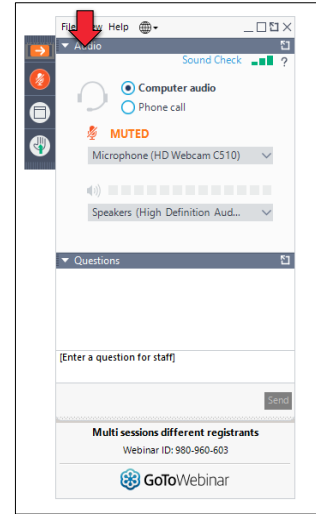


2



Audio

- Expand the audio panel to select computer audio or phone call

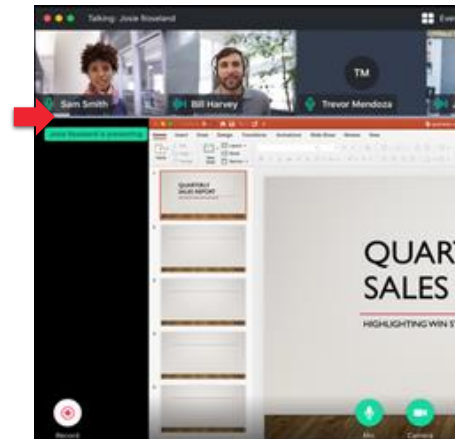


3



Video

- Use the divider line to enlarge or reduce the video feed

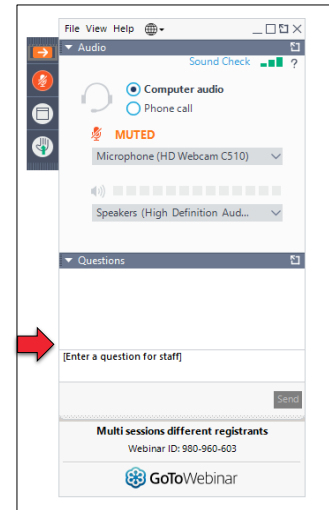


4



Questions and Comments

- Use the QUESTIONS panel



5



Archive

- This webinar is being recorded and can be accessed next week
 - You will receive an email with information on how to access the archive

6



Presentation Accessibility

- For the benefit of participants who are not able to see the presentation slides on the webinar platform, speakers will
 - Announce slide numbers
 - Describe images that are meaningful to the content of the session

7



About Your Hosts...

TransCen, Inc.

- Improving the lives of people with disabilities through meaningful work and community inclusion

Mid-Atlantic ADA Center, a project of TransCen, Inc.

- Funded by National Institute on Disability, Independent Living, and Rehabilitation Research (NIDILRR), Administration for Community Living, U.S. Department of Health and Human Services

8

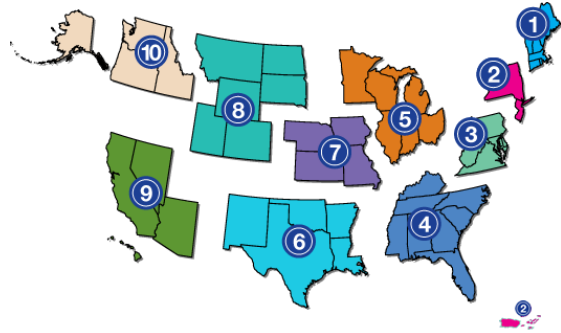


ADA National Network

- Ten regional centers provide guidance, training, and materials on the ADA

- **1-800-949-4232**

- ADAta.org



Making Arrests and Detention Accessible for Deaf and Hard of Hearing People

Bill Lockard

Program Director, DeafCAN! (Deaf Community Action Network)



For D/HH People, REALLY Making Arrests, Detention & Supervision Accessible

- **Introduction:** Program Director for human services in a Deaf Church
- **DeafCAN!** - 35% fee-based services
 - County contracts, interpreting, ASL classes, & training
 - 65% from donations and grants for most vulnerable:
 - In PA, only dedicated programs for D/HH
 - immigrants/refugees
 - inmates & returning citizens
 - first to provide SSP services for DeafBlind

11



My Background

- 41 years working with D/HH people & their families
- D/HH experience in education, health & human service (children & families, mental health & developmental disabilities, & aging)
- Criminal justice with local police & courts, state & county jails, parole, probation, forensic hospitals, crime victims & domestic violence
- 23 year volunteer D/HH inmates at SCI Graterford, now Phoenix, on communication & decision making

12



COMMUNICATION COMMUNICATION COMMUNICATION

- Some key elements to communication: clarity, empathy, listening, consistency, flexibility ... all critical for effective interaction at school, work, home, the playground, and the criminal justice system
- Add deafness / hearing loss – how do you get anything, let alone clarity, empathy...
- Now add MH, IDD, D&A, physical disabilities, aging, other health challenges
- If 95% of our work is communication, how can we serve D/HH???

13



Myths

- Lipreading / speechreading: Yes you can. NO YOU CAN'T! Masks!
- Deaf & Dumb: hearing loss has no connection to intellectual ability
- Better labels – Deaf, hard of hearing, hearing-impaired? Are you Deaf-impaired?
- Nope, signs are not universal. Nope, signs are not simple or basic.
- Nope, D/HH are no more impulsive, explosive, or introverted
- Nope, hearing aids & cochlear implants don't 'cure' hearing loss
- Diversity of D/HH people: degree, age of onset, family support, mode of communication, other challenges – DeafBlind??

14



General Accommodations

Other assistive devices: hearing aids, cochlear implants, alerting devices (vibrating watches, flashing lights, digital message boards)

Special phones: video, captioned, amplified, braille

- Sign language interpreters and CART – captions (remote or in person)
- How much access is enough? ALL programs & services?
- Healthcare, required programs, optional, work, meetings, socials?
- Staff awareness & training

15



What We Found in PA's Four Prisons

No CART /captioning (live or remote) ever been used

Primary 'interpreters' at 2 of 4 prisons were other hearing inmates, sometimes staff with beginning level skill

Problems: FULL message? Neutral? Confidential?

Intimate personal, family, health, financial information – any room for extortion or abuse?

Some used "VRI", Video Remote Interpreting, only for required classes

In person interpreting rarely used at 3 prisons and, at best, for about 10% of the needs

16



What We Found Part 2

- All had video phones, some amplified, none had caption phones
- Some had assistive devices & digital signage but rarely used
- No staff engaged any level had any special training or experience with & virtually none since being hired
- So, decisions about accommodations made without knowledge
- No staff could remember ever providing any interpreting for RHU
- No coordination or guidance between state & local systems re D/HH

17



Two-Tiered, Discriminatory Program Access

1. Like others, you must qualify for a program or service – OK
2. D/HH must also ‘apply’ for an accommodation resulting in

Deny or Delay/Deny:

Considerations of costs, coordination, security, should not be considered here but already in place

RESULT- if not denied, ‘approval’ comes too late

Even the most tenacious & ambitious eventually stop asking!

18



Impact

Imagine **constantly** being in a foreign country and not understanding

Longer sentences cause can't complete requirements

Harsher sentences because of isolation, anxiety, brutality

Less prepared when return home

MORE likely to reoffend

Families, friends, employers

19



D/HH Access

- **What is Needed:**
- Until EQUIVALENT access proven, all states should hire D/HH, ADA Coordinator to implement, train, & oversee entire state/county systems
- Standardized intake required, with communication assessment & resulting accommodations needed assigned that stays with person
- Eliminate two-tiered accommodation application
- Each D/HH person given minimum 10 hrs per week for accoms, CART or interpreters
- All prisons/jails/halfway houses... must have access to all special phones

20



D/HH Access

- **COSTS** – prohibitive? hardship? alter services? security?
- D/HH ADA Coordinator + travel training ? \$200,000 or 250,000?
- \$100 per hr x 10 = 1,000 per week per inmate or \$52,000 a year
- 30 inmates x 52,000 = 1,560,000
- Extra 200,000 for assistive technology
- Total roughly 2 million per state to be budgeted
- Actual use probably no more than 1 million
- **ONLY** skilled D/HH ADA Coordinator can ensure effective access & \$\$

21



Wrap Up, Contact Info, & Questions

- Criminal Justice System is responsible for & overwhelmed by much, the safety, security, and vast programming for the broadest area of individuals imaginable
- This actually confirms the need for specialists to serve special needs
- We believe full D/HH access is only achievable with comprehensive, state-wide approach as we have outlined
- Thank you and now accept your questions and discussion
- BillLockard@deafcanpa.org www.deafcanpa.org 484-477-6489

22



Certificates and Credits: CODE

- If you paid for a certificate of participation or credits, check the reminder email you received about this session for instructions
- Please email the code above to ADAtraining@transcen.org by **5 PM E.T. on June 23, 2021**

23



Thank You for Joining Us!

Mid-Atlantic ADA Center

Toll-free: **800-949-4232** (DE, DC, MD, PA, VA, WV)

Local: **301-217-0124**

ADAinfo@transcen.org

ADAinfo.org

24

