



Making Arrests and Detention Accessible for Deaf and Hard of Hearing People

Will begin at 2:00 p.m. Eastern Time

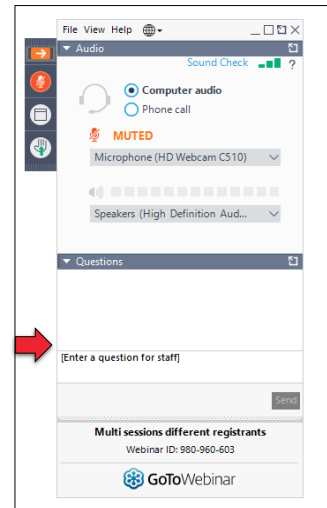
- Audio and visuals are provided through the online webinar platform
- Access to presentation handouts was included in the email reminder you received for this session
- This session will be open-captioned

1



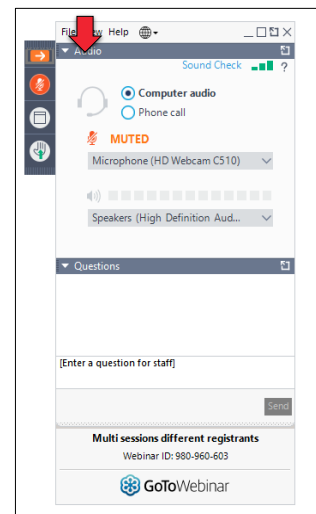
Technical Assistance

- If you experience technical difficulties
 - Use the QUESTIONS panel to let us know
 - Call 301-217-0124



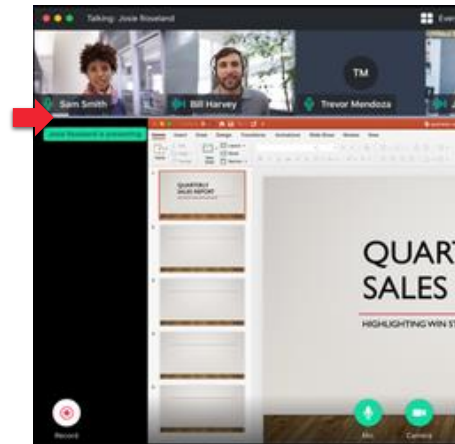
Audio

- Expand the audio panel to select computer audio or phone call



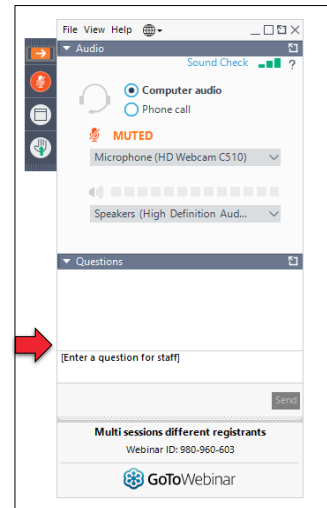
Video

- Use the divider line to enlarge or reduce the video feed



Questions and Comments

- Use the QUESTIONS panel



Archive

- This webinar is being recorded and can be accessed next week
 - You will receive an email with information on how to access the archive

Presentation Accessibility

- For the benefit of participants who are not able to see the presentation slides on the webinar platform, speakers will
 - Announce slide numbers
 - Describe images that are meaningful to the content of the session

About Your Hosts...

TransCen, Inc.

- Improving the lives of people with disabilities through meaningful work and community inclusion

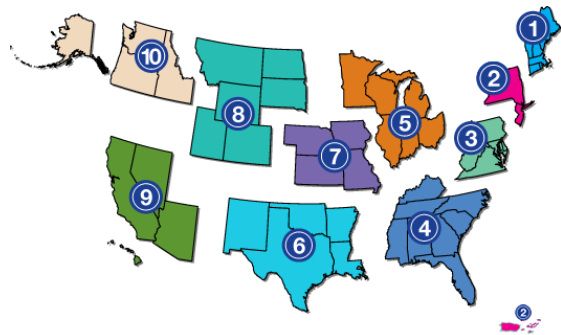
Mid-Atlantic ADA Center, a project of TransCen, Inc.

- Funded by National Institute on Disability, Independent Living, and Rehabilitation Research (NIDILRR), Administration for Community Living, U.S. Department of Health and Human Services



ADA National Network

- Ten regional centers provide guidance, training, and materials on the ADA
 - **1-800-949-4232**
 - ADAta.org





Making Arrests and Detention Accessible for Deaf and Hard of Hearing People

Bill Lockard

Program Director, DeafCAN! (Deaf Community Action Network)

10



For D/HH People, REALLY Making Arrests, Detention & Supervision Accessible

- **Introduction:** Program Director for human services in a Deaf Church
- **DeafCAN!** - 35% fee-based services
 - County contracts, interpreting, ASL classes, & training
 - 65% from donations and grants for most vulnerable:
 - In PA, only dedicated programs for D/HH
 - immigrants/refugees
 - inmates & returning citizens
 - first to provide SSP services for DeafBlind

11



My Background

- 41 years working with D/HH people & their families
- D/HH experience in education, health & human service (children & families, mental health & developmental disabilities, & aging)
- Criminal justice with local police & courts, state & county jails, parole, probation, forensic hospitals, crime victims & domestic violence
- 23 year volunteer D/HH inmates at SCI Graterford, now Phoenix, on communication & decision making

COMMUNICATION COMMUNICATION COMMUNICATION

- Some key elements to communication: clarity, empathy, listening, consistency, flexibility ... all critical for effective interaction at school, work, home, the playground, and the criminal justice system
- Add deafness / hearing loss – how do you get anything, let alone clarity, empathy...
- Now add MH, IDD, D&A, physical disabilities, aging, other health challenges
- If 95% of our work is communication, how can we serve D/HH???

Myths

- Lipreading / speechreading: Yes you can. NO YOU CAN'T! Masks!
- Deaf & Dumb: hearing loss has no connection to intellectual ability
- Better labels – Deaf, hard of hearing, hearing-impaired? Are you Deaf-impaired?
- Nope, signs are not universal. Nope, signs are not simple or basic.
- Nope, D/HH are no more impulsive, explosive, or introverted
- Nope, hearing aids & cochlear implants don't 'cure' hearing loss
- Diversity of D/HH people: degree, age of onset, family support, mode of communication, other challenges – DeafBlind??

General Accommodations

Other assistive devices: hearing aids, cochlear implants, alerting devices (vibrating watches, flashing lights, digital message boards)

Special phones: video, captioned, amplified, braille

- Sign language interpreters and CART – captions (remote or in person)
- How much access is enough? ALL programs & services?
- Healthcare, required programs, optional, work, meetings, socials?
- Staff awareness & training

What We Found in PA's Four Prisons

No CART /captioning (live or remote) ever been used

Primary 'interpreters' at 2 of 4 prisons were other hearing inmates,
sometimes staff with beginning level skill

Problems: FULL message? Neutral? Confidential?

Intimate personal, family, health, financial information – any
room for extortion or abuse?

Some used "VRI", Video Remote Interpreting, only for required classes

In person interpreting rarely used at 3 prisons and, at best, for about 10% of the
needs

What We Found Part 2

All had video phones, some amplified, none had caption phones

Some had assistive devices & digital signage but rarely used

No staff engaged any level had any special training or experience with & virtually none since being hired

So, decisions about accommodations made without knowledge

No staff could remember ever providing any interpreting for RHU

No coordination or guidance between state & local systems re D/HH

Two-Tiered, Discriminatory Program Access

1. Like others, you must qualify for a program or service – OK
2. D/HH must also 'apply' for an accommodation resulting in

Deny or Delay/Deny:

Considerations of costs, coordination, security, should not be considered here but already in place

RESULT- if not denied, 'approval' comes too late

Even the most tenacious & ambitious eventually stop asking!

Impact

Imagine **constantly** being in a foreign country and not understanding

Longer sentences cause can't complete requirements

Harsher sentences because of isolation, anxiety, brutality

Less prepared when return home

MORE likely to reoffend

Families, friends, employers

D/HH Access

- **What is Needed:**
- Until EQUIVALENT access proven, all states should hire D/HH, ADA Coordinator to implement, train, & oversee entire state/county systems
- Standardized intake required, with communication assessment & resulting accommodations needed assigned that stays with person
- Eliminate two-tiered accommodation application
- Each D/HH person given minimum 10 hrs per week for accoms, CART or interpreters
- All prisons/jails/halfway houses... must have access to all special phones

20



D/HH Access

- **COSTS** – prohibitive? hardship? alter services? security?
- D/HH ADA Coordinator + travel training ? \$200,000 or 250,000?
- \$100 per hr x 10 = 1,000 per week per inmate or \$52,000 a year
- 30 inmates x 52,000 = 1,560,000
- Extra 200,000 for assistive technology
- Total roughly 2 million per state to be budgeted
- Actual use probably no more than 1 million
- **ONLY** skilled D/HH ADA Coordinator can ensure effective access & \$\$

Wrap Up, Contact Info, & Questions

- Criminal Justice System is responsible for & overwhelmed by much, the safety, security, and vast programming for the broadest area of individuals imaginable
- This actually confirms the need for specialists to serve special needs
- We believe full D/HH access is only achievable with comprehensive, state-wide approach as we have outlined
- Thank you and now accept your questions and discussion
- BillLockard@deafcanpa.org www.deafcanpa.org 484-477-6489

Certificates and Credits: CODE

- If you paid for a certificate of participation or credits, check the reminder email you received about this session for instructions
- Please email the code above to ADAtraining@transcen.org by **5 PM E.T. on June 23, 2021**

Thank You for Joining Us!

Mid-Atlantic ADA Center

Toll-free: **800-949-4232** (DE, DC, MD, PA, VA, WV)

Local: **301-217-0124**

ADAinfo@transcen.org

ADAinfo.org