



The United States Access Board is an independent federal agency that promotes equality for people with disabilities through leadership in accessible design and the development of accessibility guidelines and standards.



21st Annual
Mid-Atlantic ADA Update
September 17 & 18, 2014
Baltimore, Maryland
BWI Airport Marriott Hotel

Outdoor Developed Areas

***Architectural Barriers Act (ABA)
Accessibility Standards for Trails, Picnic and
Camping Facilities, Viewing Areas, and
Beach Access Routes***

Background

- Rulemaking began in early 90's (initially covered ADA and ABA outdoor developed areas)
- Regulatory Negotiation Committee consensus report on "proposed accessibility guidelines"
- Limited coverage to the ABA due to difficulties with regulatory assessment
- Future rulemaking under the ADA planned



UNITED STATES ACCESS BOARD



ABA Coverage

Applies to facilities designed, built, altered or leased with Federal funds

- **Federal buildings (e.g., post offices)**
- **Non-Federal buildings (e.g., school built with Federal money)**

UNITED STATES ACCESS BOARD

What's covered

- Facilities constructed or altered by
 - Federal agencies
 - Non-federal entities constructing facilities on federal land on behalf of federal agencies pursuant to a concession contract, partnership agreement, or similar arrangement

What's not covered

- ADA – Title II entities - State and local governments, Title III entities, places of public accommodation
- ABA – facilities built or altered with Federal grants and loans (ABA)

5

Options for those not covered

- **ADA** - where no standards exist...
 - general non-discrimination prohibition and program accessibility requirements for state and local governments apply (includes TRAILS, PICNIC AND CAMPING ELEMENTS, VIEWING AREAS)
- To determine appropriateness of using outdoor recreation access routes and beach access routes (in lieu of an accessible route) – **contact DOJ – 800 514-0301**

6

Format and organization

- ABA Chapter 2:
Scoping Requirements
- F244 Camping Facilities
- F245 Picnic Facilities
- F246 Viewing Areas
- F247 Trails
- F248 Beach Access Routes

UNITED STATES ACCESS BOARD

Format and organization

- 1011 Outdoor Constructed Features
- 1012 Parking Spaces within Accessible
Camping Units and Picnic Units
- 1013 Tent Pads and Tent Platforms
- 1014 Camp Shelters
- 1015 Viewing Areas
- 1016 Outdoor Recreation Access Routes
- 1017 Trails
- 1018 Beach Access Routes
- 1019 Conditions for Exceptions

UNITED STATES ACCESS BOARD

Conditional exceptions

- Apply on a provision-by-provision basis
- Where full compliance with a technical provision is not possible because of the limitations and constraints included in the conditional exceptions...
- “extent practicable”

UNITED STATES ACCESS BOARD

Entire trail exemption

- When applying conditional exceptions to portions of the trail results in exempting the entire trail or beach access route from the technical provisions...
- Notify the Board where an entire trail or beach access route is exempted

UNITED STATES ACCESS BOARD

Conditional exceptions

- Compliance is not practicable due to terrain
- Compliance cannot be accomplished with the prevailing construction practices



UNITED STATES ACCESS BOARD

Conditional exceptions

- Compliance would fundamentally alter the function or purpose of the facility or the setting
- Compliance is precluded by the:
 - Endangered Species Act;
 - National Environmental Policy Act;
 - National Historic Preservation Act;
 - Wilderness Act; or
 - Other Federal, State, or local laws



UNITED STATES ACCESS BOARD

Permissible Uses of Conditions for Exceptions

Exception Permitted for:	Application
Outdoor Constructed Features - clear ground space	Alterations Only
Tent Pads/Tent Platforms - any provision	New Construction or Alterations
Camp Shelters any provision	New Construction or Alterations
Outdoor Recreation Access Routes at Camping facilities, Picnic facilities, and Trailheads - any provision	Alterations Only
Viewing Areas - any provision	Alterations Only
Outdoor Recreation Access Routes to Viewing Areas -- any provision	New Construction or Alterations
Trails - any provision	New Construction or Alterations
Beach Access routes - any provision	New Construction or Alterations

UNITED STATES ACCESS BOARD

Trails

- Pedestrian route developed primarily for outdoor recreational purposes
- Newly constructed/altered trail directly connected to a trailhead or another trail that substantially complies with guidelines
- Conditional exceptions permitted – new and altered
- Shared use paths to be addressed in separate rulemaking

UNITED STATES ACCESS BOARD

Trailheads

- Outdoor space developed to serve as an access point to a trail
 - Not a junction of two or more trails where no other access point is provided
- 20% of each type of outdoor constructed feature provided within trailhead to be accessible

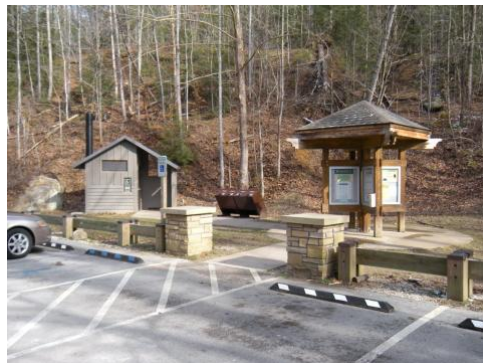


UNITED STATES ACCESS BOARD

15

Trailheads

- At least one outdoor recreation access route connect to parking, site arrival point, the starting point of trail, accessible elements, spaces, and facilities within trailhead



UNITED STATES ACCESS BOARD

16

Trail signs

- New trail information signs provided at trailheads on newly constructed or altered trails
- Required information
 - length of the trail or trail segment
 - surface type
 - tread width (typical/minimum)
 - running and cross



UNITED STATES ACCESS BOARD

17

Trails

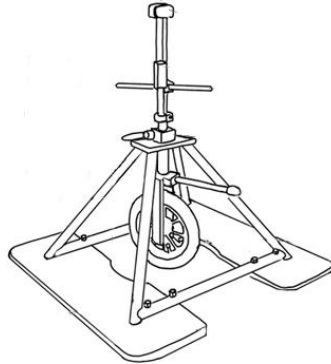
- 36 inches minimum width
- Passing spaces – every 1,000 feet where less than 60 inches in width
- Tread obstacles – 2 inches maximum, except concrete, asphalt, or board = ½ inch
- Openings – ½ inch maximum



UNITED STATES ACCESS BOARD

Trails

- Surface – firm and stable

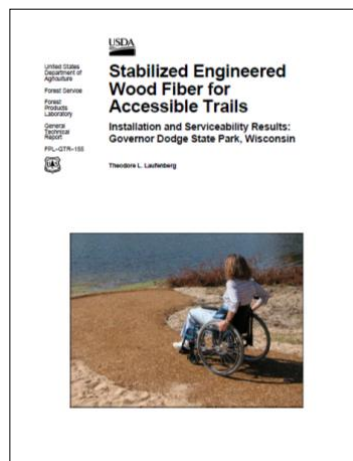


UNITED STATES ACCESS BOARD

Research Projects



National Trails Surface Study



UNITED STATES ACCESS BOARD

Trail Slope/Grade

Running Slope of Trail Segment		Maximum Length of Segment
Steeper than	But not Steeper than	
1:20	1:12	200 feet (61 m)
1:12	1:10	30 feet (9 m)
1:10	1:8	10 feet (3050 mm)

UNITED STATES ACCESS BOARD

Trails

- Cross slope – 1:20 max, except concrete, asphalt, or boards = 1:48
- Resting intervals – 60 in. long, alongside trail - turning space, slope 1:20 max, except concrete, asphalt, or boards = 1:48
- Gates and barriers



UNITED STATES ACCESS BOARD

Protruding Objects

Constructed elements
on trails, resting
intervals, and passing
spaces
Compliance with 307



UNITED STATES ACCESS BOARD

Outdoor recreation access route

- Modified accessible route
- Connects outdoor constructed features within picnic facilities/units, camping facilities/units, designated trailheads or viewing areas



UNITED STATES ACCESS BOARD

Outdoor recreation access route

- Conditional exceptions permitted when altering existing ORAR



UNITED STATES ACCESS BOARD

Outdoor recreation access route

- Where ORAR are provided within vehicular ways – exception for passing spaces, slope, and resting intervals



UNITED STATES ACCESS BOARD

Outdoor recreation access route

- Adjacent recreation facilities



UNITED STATES ACCESS BOARD

Outdoor recreation access route

- Surface – firm and stable
- Clear width – 36 inches minimum
- Passing space – required where width is less than 60 inches - 200 ft. max
- Obstacles – 1 inch maximum, except concrete, asphalt, or boards = ½ inch
- Openings – ½ inch



UNITED STATES ACCESS BOARD

Outdoor recreation access route

Running Slope of Segment of Outdoor Recreation Access Route		Maximum Length of Segment
Steeper than	But not Steeper than	
1:20	1:12	50 feet (15 m)
1:12	1:10	30 feet (9 m)

UNITED STATES ACCESS BOARD

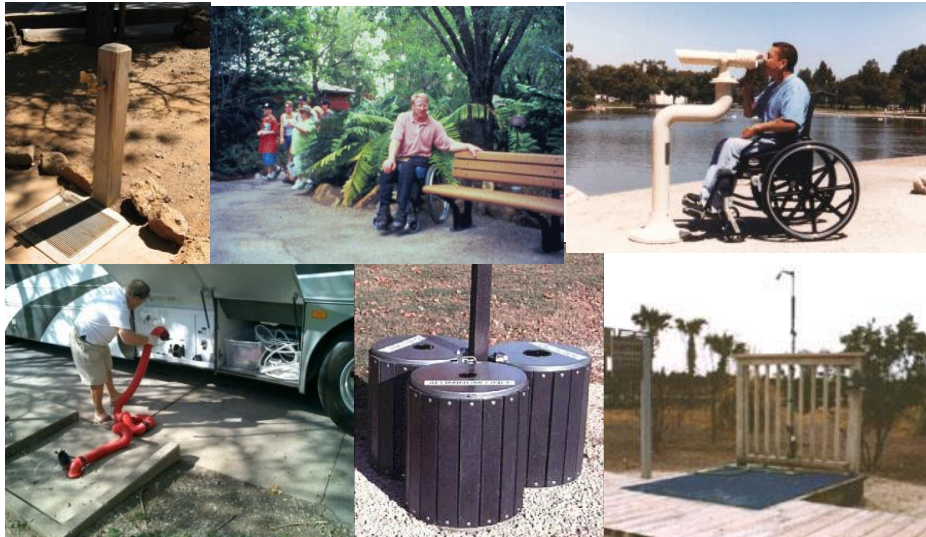
Outdoor recreation access route

- Cross slope – 1:20 maximum, except concrete, asphalt, or boards = 1:48
- Resting intervals – 60 inches in length minimum, adjacent to ORAR - turning space
- Protruding object
constructed elements



UNITED STATES ACCESS BOARD

Outdoor constructed features



UNITED STATES ACCESS BOARD

Outdoor constructed features

- Picnic tables
- Fire rings
- Grills
- Fireplaces and woodstoves
- Trash and recycling containers
- Water hydrants
- Utility and sewage hookups
- Outdoor rinsing showers
- Benches
- Viewing Scopes

UNITED STATES ACCESS BOARD

Outdoor constructed features

- **Scoping** - Camping facilities, Picnic facilities; Viewing areas, Trailheads, and Trails
- Outdoor constructed features are not scoped at beaches



UNITED STATES ACCESS BOARD

Outdoor constructed features

- Clear ground space – exception where feature is altered, but surface is not OR where conditional exceptions permit departures in alterations
- Size and location – addressed in a table for each element
- Surface – firm and stable
- Surface slope – 1:20 except asphalt, concrete, or boards = 1:48 maximum
- Openings = ½ inch

UNITED STATES ACCESS BOARD

Picnic tables

- One wheelchair space for each 24 linear feet of usable table surface, knee and toe clearance



UNITED STATES ACCESS BOARD

Picnic tables

- Positioned for forward approach
- Knee and toe complying with 306
- 36 inches along all usable sides of the table



UNITED STATES ACCESS BOARD

Fire rings, grills, fireplaces, and woodstoves

- fire building surface - 9 inches minimum above the clear ground space
- cooking surface – 15 inches minimum – 34 inches maximum above clear ground space.



UNITED STATES ACCESS BOARD

Fire rings, grills, fireplaces, and woodstoves

- Clear space - 48 inches by 48 inches on all usable sides of the fire ring, grill, fireplace, or woodstove
- Center the space on each usable side
- Raised edges/walls – depth 10 inches max.
- Operable parts – must be in reach range but no req. for grasping, twisting,



UNITED STATES ACCESS BOARD

Viewing scopes

- Where provided in viewing areas 20%, not < 1 of each
- – eyepieces located between 43 inches minimum and 51 inches maximum
- Operable parts – exceptions for several features

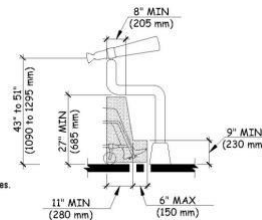


Figure 25—Technical requirements for viewing scopes.

UNITED STATES ACCESS BOARD

Viewing scopes

- 36 inches by 48 inches positioned for forward approach.
- Eyepiece centered on the space.
- Knee and toe clearance complying with 306.



UNITED STATES ACCESS BOARD

Water hydrants

- 48 by 72 inches
- Located so that water spout is 11" min. and 12" max. from the rear center of the long side of the space
- Adjoining ORAR, trail, or another clear space

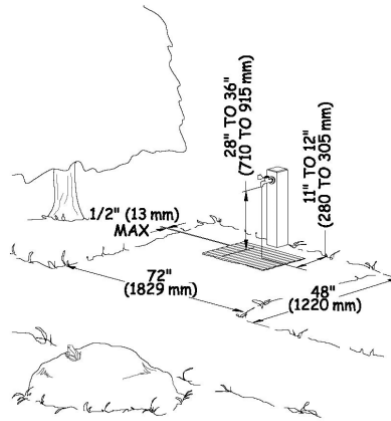


Figure 23—Technical requirements for water hydrants.

UNITED STATES ACCESS BOARD

Water hydrants

- Water spouts – 28 inches minimum – 36 inches maximum.
- Operable parts – comply with reach ranges only
- No requirement for tight grasp, twisting, or pinching with one hand (309.4)



UNITED STATES ACCESS BOARD

Utility and sewage hookups

- 30 inches by 60 inches
- Locate space so that the hook-ups are at the rear center
- Bollards may not obstruct the clear ground space



UNITED STATES ACCESS BOARD

Outdoor rinsing showers

- Clear ground space - 60 inches by 60 inches centered on the shower heads
- Locate the clear ground space so that the shower pedestal is at rear end of the space.
- At least one handheld or fixed head 48 inches minimum



UNITED STATES ACCESS BOARD

Benches

- Clear ground space - 36 inches by 48 inches positioned near the bench with one side of the space adjoining an ORAR or trail.
- Clear ground space may not overlap the outdoor recreation access route or trail.



UNITED STATES ACCESS BOARD

Trash and recycling containers

- Clear ground space
 - 36 X 48 – forward
 - 30 X 60 – parallel
- Adjoin or connect to an ORAR, trail



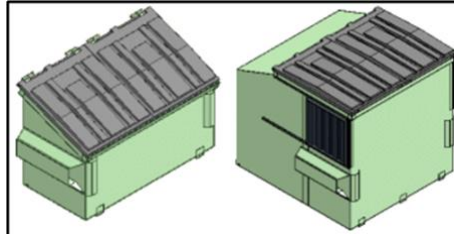
UNITED STATES ACCESS BOARD

Trash and recycling containers

- Hinged lid receptacles designed to keep out large animals not required to comply with operable parts. (309.4)



- Dumpster type trash and recycling receptacles - not required to comply with reach ranges or operable parts.



UNITED STATES ACCESS BOARD

Picnic facilities

- Two new terms
 - Picnic facility – developed for outdoor recreational purposes that contains picnic units.



UNITED STATES ACCESS BOARD

Picnic facilities

- Picnic unit – outdoor space in a picnic facility that contains outdoor constructed features



UNITED STATES ACCESS BOARD

Picnic facilities

- At least 20% of picnic units in picnic facility where two or more picnic units are provided
- Two or fewer = each accessible



UNITED STATES ACCESS BOARD

Picnic facilities

- 20% of outdoor constructed features in public and common use areas serving accessible picnic units
- Dispersion of accessible picnic units required
- ORAR connection



UNITED STATES ACCESS BOARD

Camping facilities

- Two new terms
 - Camping facility – developed for outdoor recreational purposes that contains camping units.



UNITED STATES ACCESS BOARD

Camping facilities

- Camping unit – outdoor space in a camping facility that contains outdoor constructed features, RV parking spaces, tent pads or tent platforms, or camp shelters.



UNITED STATES ACCESS BOARD

Camping facilities

Total Number of Camping Units Provided in Camping Facility	Minimum Number of Accessible Camping Units Required
1	1
2 to 25	2
26 to 50	3
51 to 75	4
76 to 100	5
101 to 150	7
151 to 200	8
201 and over	8, plus 2 percent of the number over 200

UNITED STATES ACCESS BOARD

Camping facilities

- Applies to each type of camping unit provided.
- Dispersion of accessible camping units required



UNITED STATES ACCESS BOARD

Outdoor constructed features

- Multiple features within accessible units at least 2
- 20% of OCF's in public and common use areas serving accessible camping units
- ORAR connection



UNITED STATES ACCESS BOARD

Camping facilities

- Parking spaces within accessible camping units
 - RV space – 20 feet wide minimum, exception for 16 feet where two adjacent spaces are provided
 - Other vehicles – 16 feet wide minimum
 - Surface – firm and stable
 - Slope - 1:20 maximum, except asphalt, concrete, or boards = 1:48



UNITED STATES ACCESS BOARD

Camping facilities

- Tent pads and tent platforms
 - Clear ground space – 48 inches on all usable sides, exception where conditional exceptions apply
 - Surface – stable and firm
 - Slope – 1:20 maximum, except asphalt, concrete, or boards = 1:48
 - Tent platform –



UNITED STATES ACCESS BOARD

Camping facilities

Tent platforms/ Camping shelters

- Floor height where elevated at entrance - 19 inches maximum above ground
- Where level entry or ramped entry is provided – turning space required



UNITED STATES ACCESS BOARD

Camping facilities

- Camp shelters – conditional exceptions may apply
 - Clear ground space at entrance – 36 inches minimum by 48 inches minimum
 - Surface – firm and stable
 - Slope – 1:20 maximum, except asphalt, concrete, or boards = 1:48



UNITED STATES ACCESS BOARD

Viewing areas

- Outdoor space developed for viewing a landscape or point of interest
- 20% of each type of outdoor constructed feature
- ORAR connection



UNITED STATES ACCESS BOARD

Viewing areas

- Clear ground space –
 - at each distinct viewing location
 - one full unobstructed side of space to adjoin or overlap an ORAR, trail, or another clear ground space



UNITED STATES ACCESS BOARD

Beach access routes

Where required –

The construction or alteration of any of the following facilities to serve the beach:

1. Circulation paths;
2. Parking facilities;
3. Toilet facilities; or
4. Bathing facilities

Exception limits the cost of the beach access route to no more than 20 percent of the cost of constructing or altering the facilities

UNITED STATES ACCESS BOARD

Beach access routes

- Permanent or removable
- Minimum number – at least one for each $\frac{1}{2}$ mile of shoreline managed by the entity
 - Not required to exceed the number of pedestrian access points to a beach provided by the entity



UNITED STATES ACCESS BOARD

Beach access routes

- Connections -
 - High tide level
 - Mean high water
 - Normal recreation pool
- Clear width - 60 inches min.
- Surface - firm and stable
- Obstacles - 1 inch max, except concrete, asphalt, or boards = ½ inch



UNITED STATES ACCESS BOARD

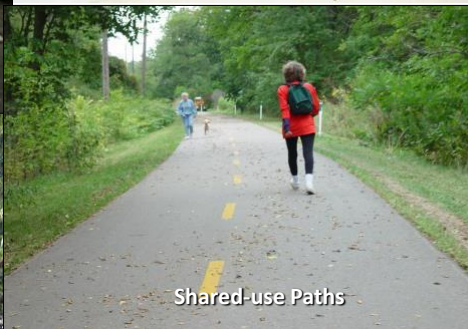
Shared Use Paths



Next steps

- Complete regulatory assessment as part of Public Rights of Way Rule
- Issue final rule
- Adoption under the ADA and the ABA

Types of Facilities

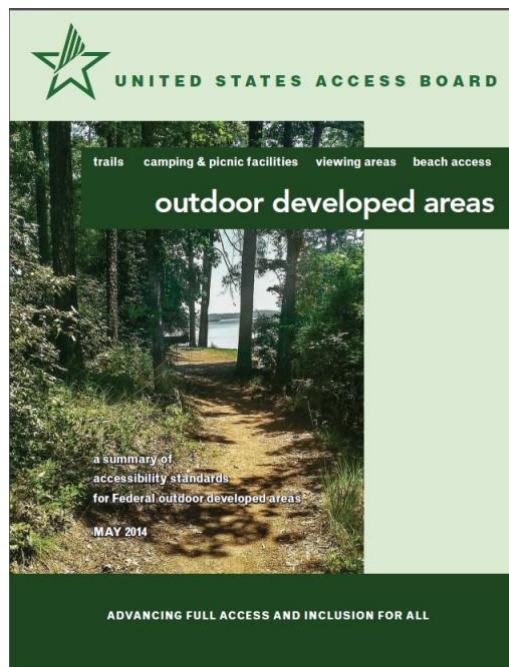


UNITED STATES ACCESS BOARD

PEDESTRIAN ROUTE	KEY ELEMENTS OF DESIGN INTENT
ACCESSIBLE ROUTES	Connects accessible elements and spaces of a building or facility on a site
SIDEWALK	Parallel to roadway Designed for pedestrians (not bicycles) Sometimes part of the roadway
TRAIL	Designed for the "recreation experience" Does not connect elements Generally includes a "trailhead" Has limited transportation function
SHARED-USE PATHS	Intended for multi-use Bicycle/Transportation focus Machine "laid" surface (improved) Often located in an "independent corridor" outside of the public right of way
UNITED STATES ACCESS BOARD	

New guide available!

<http://www.access-board.gov/attachments/article/1637/outdoor-guide.pdf>





UNITED STATES ACCESS BOARD

Advancing Full Access and Inclusion for All



1331 F Street NW
Suite 1000
Washington, DC
20004-1111

(800) 872-2253 (voice)

(800) 993-2822 (TTY)

Fax: (202) 272-0081

ta@access-board.gov

www.access-board.gov

UNITED STATES ACCESS BOARD