



Welcome!

Accessibility and the ADA: Facility Standards Update

will begin at 2:00 p.m. Eastern Time

1



Listening to the Webinar



- Online:
 - Please make sure your computer speakers are turned on or your headphones are plugged in
 - Control the audio broadcast via the AUDIO & VIDEO panel
 - If you have sound quality problems, please go through the Audio Wizard by selecting the microphone icon



2



Listening to the Webinar (cont.)



- To connect by telephone:

1-443-453-0034

Pass Code:

368564

This is **not** a toll-free number

3



Captioning



- Real-time captioning is provided; open the window by selecting the “cc” icon in the Audio & Video panel
 - You can re-size the captioning window, change the font size, and save the transcript



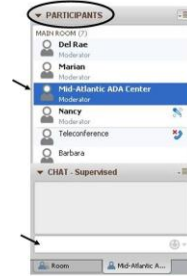
4



Submitting Questions



- In the webinar:
 - Double-click on “Mid-Atlantic ADA Center” in the Participant List to open a tab in the Chat panel (keyboard: F-6 and arrow up or down to find Mid-Atlantic ADA Center); type your question in the text box and “enter”
 - Your question will be sent to the presenters; other participants will not be able to see it
- E-mail: ADAtesting@transcen.org



5



Technical Assistance



- If you experience technical difficulties
 - Use the Chat panel to send a message to the Mid-Atlantic ADA Center
 - E-mail ADAtesting@transcen.org
 - Call 301-217-0124

6



Archive



- This webinar is being recorded and can be accessed within a few business days
 - Mid-Atlantic ADA Center website:
 - <http://adainfo.org/content/AccessibilityandADAWebinars>

7



Accessibility and ADA: Facility Standards Update

Technical Specifications: Chapters 8 - 10

8



Today's Agenda



- Chapter 8: Special Rooms, Spaces, and Elements
- Chapter 9: Built-In Elements
- Chapter 10: Recreation Facilities
- Questions

9



HIGHLIGHTS

Chapter 8: Special Rooms, Spaces, and Elements

10



What's in Chapter 8?



- 801 General
- 802 Wheelchair Spaces, Companion Seats, and Designated Aisle Seats
- 803 Dressing, Fitting, and Locker Rooms
- 804 Kitchens and Kitchenettes
- 805 Medical Care and Long-Term Care Facilities
- 806 Transient Lodging Guest Rooms
- 807 Holding Cells and Housing Cells
- 808 Courtrooms
- 809 Residential Dwelling Units
- 810 Transportation Facilities
- 811 Storage

11



Assembly Area Seating



- Slightly *increased* scoping for wheelchair seating locations in certain smaller venues
- Significantly *decreased* scoping in larger venues
- Much more detailed requirements for dispersion, including regulatory requirements added to guidelines by DOJ
 - Stadium-style movie theaters
 - Temporary platforms/temporary seating

12



Kitchens and Kitchenettes

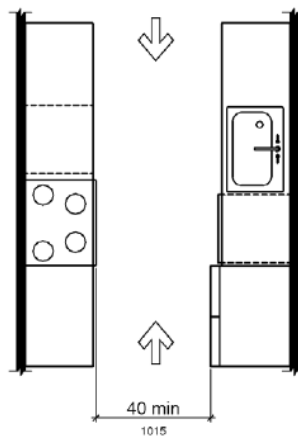


- New specifics for appliance controls, storage space, work surfaces, maneuvering clearances, and clearances at appliances and fixtures
 - Requirements and allowances for kitchens in residential dwelling units
 - Added regulatory requirements for kitchens in housing at places of education

13



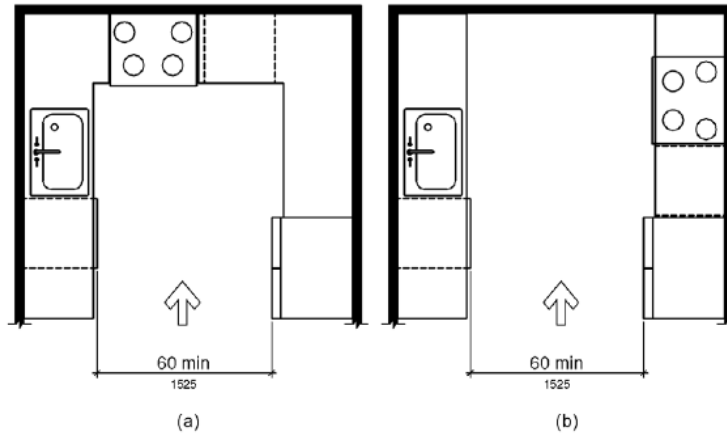
Pass-Through Kitchens



14



U-Shaped Kitchens



15



No-Cook Kitchens



- Exceptions for kitchen without cook top or conventional range
 - Standard clearances (40" min. for pass-through or 60" min for U-shaped) **not** required
 - Accessible *route* still required
 - Parallel approach allowed to sink
 - Other accessible features still required (height 34" max., accessible faucet, etc.)

16



Transient Lodging: Multiple Buildings on a Site



• Title III Regulations

- Separate facilities, built on a common site under one building permit, may combine the number of total rooms to determine scoping IF each facility has fewer than 50 rooms
- Such facilities are scoped separately if they have more than 50 rooms



19



Dispersion



- Dispersion among classes, types, etc.
 - When minimum number does not allow complete dispersion, follow priorities:
 - Type
 - Number of beds
 - Amenities

20



Alterations



- Alterations
 - Scope limited additions/alterations projects separately until new construction scoping levels are achieved

21



Alterations: Advisory



- Alterations ADVISORY
 - In *alterations* and additions, the minimum required number of *accessible* guest rooms is based on the total number of guest rooms altered or added instead of the total number of guest rooms provided in a facility. Typically, each *alteration* of a facility is limited to a particular portion of the facility. When *accessible* guest rooms are added as a result of subsequent *alterations*, compliance with 224.5 (Dispersion) is more likely to be achieved if all of the *accessible* guest rooms are not provided in the same area of the facility.

22



Accessible Guest Rooms

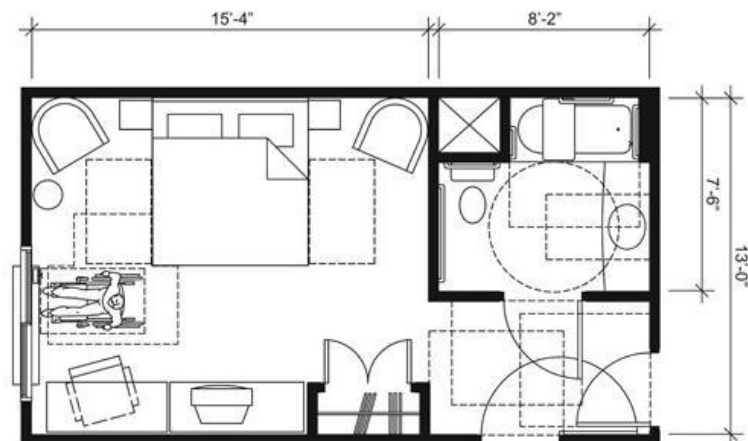


- What's new in the rooms
 - Changes that apply to all types of facilities (toilet centerline position, transfer space at toilets, allowances related to rear wall grab bars, toilet paper dispenser position, features of hand-held shower spray units, permanently installed visible alarm signal devices, etc.), *plus ...*
 - **Vanity counter space provided in accessible rooms must be comparable to that provided in non-accessible rooms**

23



Sample Plans: Accessible Guest Rooms



24



Housing: Places of Education



- DOJ regulations require housing at places of education to follow TRANSIENT LODGING provisions, plus
 - Accessible route *throughout* multi-bedroom units that include mobility-accessible sleeping room(s)
 - Turning space provided in *each room* served by accessible route
 - Accessible kitchen, including turning space and an accessible work surface

25



Housing at Places of Education: Exception



- Apartments or townhouses leased year-round exclusively to graduate students or faculty, which do not contain any public or common use areas available for educational programming, are subject to requirements for residential facilities (not transient lodging requirements)

26



“Elevator Exemption”



- Distinction between Title II and Title III
 - Application of *transient lodging* standards to housing at places of education means entities can not use elevator exemption allowed for *residential* facilities, *however ...*
 - Traditional elevator exemption available to *private entities* (fewer than 3 stories OR fewer than 3000 sq. ft. per story) is *unchanged*

27



Detention and Correctional Facilities



- DOJ: regulatory additions under Title II
 - Increased scoping for mobility-accessible cells: **3%**
 - Dispersed among classification levels
 - Requirements for alterations to eventually achieve 3% mobility-accessible cells
 - May use comparable “substitute” cells



28



More on Jails and Prisons



- Special cells (detoxification, medical isolation, protective custody, etc.)
 - One of each type mobility-accessible
- Communication access
 - 2% of general purpose cells
- Requirements for visiting areas

29



Social Service Centers



- DOJ regulations require social service center establishments (e.g. group homes, halfway houses, shelters) that provide temporary sleeping accommodations *or* residential dwelling units to comply with standards for residential facilities, *plus ...*

30



Residential Dwelling Units: Mobility Features



- Exceptions allowed
 - Adjustable-height sinks
 - “Adaptability” for grab bars, shower seats, and cabinetry under lavatories and sinks
 - Toilet seat height permitted 15” to 19” above the finish floor
 - Lavatory permitted 18” from toilet centerline (to near edge of lavatory) where clearance of at least 66”, measured from the rear wall, is available around the toilet

33



Residential Unit Toilet Allowance

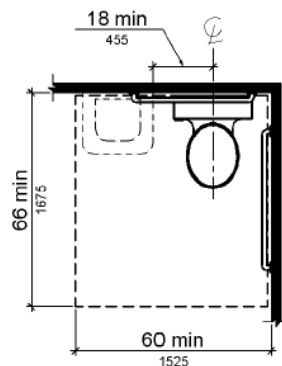


Figure 604.3.2 (Exception) Overlap of Water Closet Clearance in Residential Dwelling Units

34



Residential Dwelling Units: Communication Features



- Fire alarm/smoke detection: system wiring/visible and audible device in unit, where systems/devices are provided
- Visible signal for doorbell
- Means to visually identify visitor at door (door scope)
- Two-way communication systems, where provided, support voice and TTY

35



HIGHLIGHTS

Chapter 9: Built-In Elements

36



What's in Chapter 9?



- 901 General
- 902 Dining Surfaces and Work Surfaces
- 903 Benches
- 904 Check-Out Aisles and Sales and Service Counters

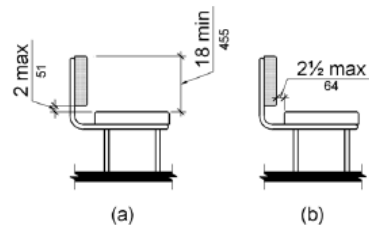
37



Accessible Benches



- Size dimensions: 42" long minimum and depth 20" – 24"
- Clarification that clear floor space is parallel to short end of bench
- May be affixed to wall *or* have specified back support



38





HIGHLIGHTS

Chapter 10: Recreation Facilities

39



What's in Chapter 10?



- 1001 General
- 1002 Amusement Rides
- 1003 Recreational Boating Facilities
- 1004 Exercise Machines and Equipment
- 1005 Fishing Piers and Platforms
- 1006 Golf Facilities
- 1007 Miniature Golf Facilities
- 1008 Play Areas
- 1009 Swimming Pools, Wading Pools, and Spas
- 1010 Shooting Facilities with Firing Positions

40



Amusement Rides



- GENERAL EXCEPTION
 - Mobile or portable (traveling carnivals, fairs, etc.)
- EXCEPTIONS from requirement to provide wheelchair seating space, transfer seat, or transfer device
 - Operated by rider (e.g. bumper cars)
 - Primarily for children, adult assistance on and off
 - Rides with no seats (e.g. Roundup)

41



Boating Facilities



- Boat slips: a portion of a fixed or floating pier used for berthing (transient or long term), or for getting on and off boats
- Accessible boat slips provided according to scoping table, dispersed among types
 - Where slips are not marked, 40 feet = 1 slip
- Boarding piers at boat launch ramps: 5%

42



Gangways



- Requirements apply to gangways that connect a fixed facility or land with a floating structure, *not a vessel*
- Exceptions for gangways
 - No “resting platforms” required
 - Slopes should not exceed 1:12, **but** gangways do not have to be longer than 80 feet, or, in facilities with fewer than 25 boat slips, gangways do not have to be longer than 30 feet

43



Exercise Machines



- At least one of each type must provide clear floor space, positioned for use or transfer



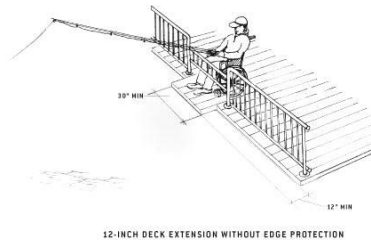
44



Fishing Piers and Platforms



- Exceptions for gangway slopes
 - Gangways do not have to be longer than 30 feet
- Where railings are provided, 25% accessible, dispersed
 - Railing no higher than 34", accompanied by edge protection OR surface extension with toe clearance under railing



45



Golf Courses

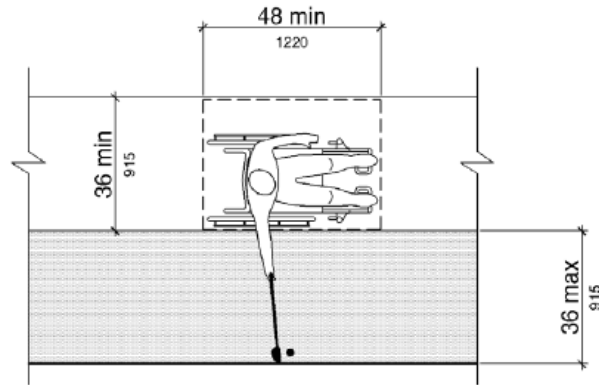


- Accessibility is based on ***golf cars***, not wheelchairs
 - 48" wide min. passages and accessible routes on course and to related spaces where golf cars may be used (weather shelters, bag drop, etc.)
 - 60" x 96" min. clear space in weather shelters
 - Handrails not required on course; if provided, route or passage must be 60" wide min.

46



Miniature Golf Club Reach Range



Note: Running Slope of Clear Floor or Ground Space Not Steeper Than 1:20

49



Play Areas



- Understanding definitions is essential!
 - Play component
 - Ground level play component
 - Elevated play component
 - Soft contained play structure
 - Use zone



50



Water Play Components



- Remember that requirements for water play components are addressed as “play areas” (not swimming pools)!



51



Swimming Pools, Wading Pools, and Spas



MEANS OF POOL ACCESS

POOL TYPE	SLOPED ENTRY	LIFT	TRANSFER WALL	TRANSFER SYSTEM	STAIRS
Small swimming (under 300 linear feet of pool wall); only 1 means required AS LONG AS one is ...	✓	✓			
Large swimming (300 or more linear feet of pool wall); 2 means required	✓*	✓*	✓	✓	✓
User access limited to one area (wave action, leisure river, etc.)	✓	✓		✓	
Wading	✓				
Spa		✓	✓	✓	

*Primary means must be sloped entry or lift; secondary means can be any permitted type.

52



Questions?



53



Contact Us



- **ADA questions**
 - **ADA National Network**
 - 1-800-949-4232 V/TTY
 - www.adata.org
- **Questions about this presentation**
 - **Mid-Atlantic ADA Center**
 - 1-800-949-4232 V/TTY (DC, DE, MD, PA, VA, WV)
 - 301-217-0124 local
 - www.adainfo.org

54

